

Rightsizing ASD

REIMAGINE • RENEW

Is Now the Time for Anchorage to Consider Rightsizing ASD's Infrastructure?



Anchorage School District
Educating All Students for Success in Life

Properly Resourced Schools Look Like...



**Balanced Class
Sizes**



**Minimize
the # of unintended
combination classes**



**Full-time
school
support staff**



**Diverse course
offerings and
activities for
students**



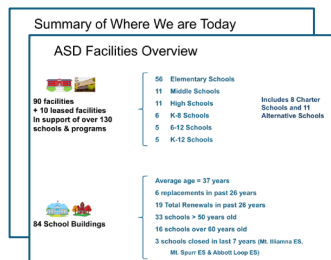
**Adequate budget
to meet student
needs**



**Safe and healthy
schools**

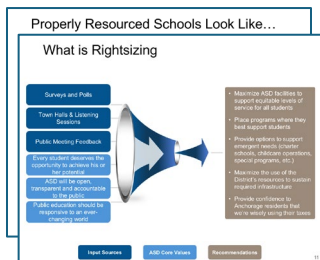
Summary of Previous Briefings

Apr 23rd, 2024



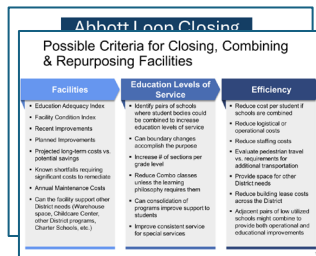
Summary of Enrollment, Declining Birthrate, Education Levels of Service & Facilities

June 4th, 2024



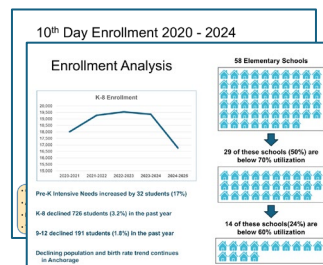
Small School Pros & Cons, School size & Levels of Service, Potential repurpose possibilities

August 20th, 2024



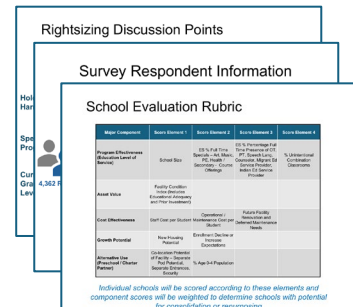
Student Outcomes from Abbott Loop closure, Survey Results, Enrollment History

September 17th, 2024



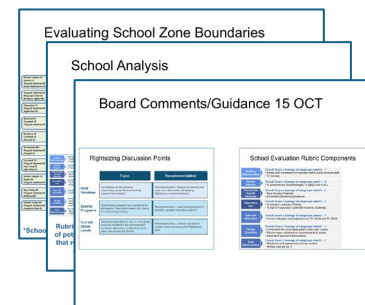
Enrollment Analysis

October 1st, 2024



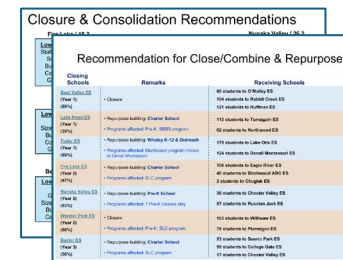
Guardrails, 3rd Survey Summary, Rightsizing Components, Evaluation Rubric

October 15th, 2024



Evaluating boundaries, School analysis & Board Guidance

November 3rd, 2024



Initial Recommended Close/Repurpose List of Schools

Before and After Utilization % for Gaining Schools

Baxter **Capacity: 436**

17 to Chester Valley	90 to College Gate	53 to Scenic Park
64% → 71%	70% → 90%	77% → 87%

Bear Valley **Capacity: 461**

121 to Huffman	104 to Rabbit Creek	80 to O'Malley
63% → 93%	62% → 88%	79% → 97%

Fire Lake **Capacity: 412**

2 to Chugiak	40 to Birchwood	108 to Eagle River
79% → 79%	65% → 76%	53% → 76%

Lake Hood **Capacity: 469**

113 to Turnagain	32 to Northwood
46% → 68%	64% → 72%

Nunaka Valley **Capacity: 306**

57 to Russian Jack	39 to Chester Valley
51% → 63%	64% → 79%

Tudor **Capacity: 436**

208 to Lake Otis	124 to Denali
51% → 97%	61% → 85%

Wonder Park **Capacity: 435**

103 to Williwaw	78 to Ptarmigan
75% → 95%	80% → 97%

Community Session Feedback

**Thoroughness
and
Transparency**

**Show More
Data**

**Program
Considerations**

**Before and
After School
Programs**

**PreK and
Daycare**

**Transportation
Concerns**

**To/From if
School
Changed**

**Community Felt
Encouraged
Having ASD
Staff and Board
Members at
Community
Sessions**

**Community Felt
Heard and
Listened To at
Sessions**

**Community
Appreciated
Data Presented
Regarding
Rezoning and
Consolidation**

Before & After School Programs



Baxter
(YMCA)

Chester Valley (Camp Fire on Half Days)

College Gate (YMCA)

Scenic Park (YMCA)



Bear Valley
(BVCA: Before,
Preschool, & After)

Huffman (Camp Fire on Half Days)

Rabbit Creek (Rabbit Creek Community Association operates during Spring Break)

O'Malley (Camp Fire on Half Days)



Fire Lake
(No Programs)

Chugiak (Camp Fire on Half Days)

Birchwood (No Programs)

Eagle River (YMCA)

Before & After School Programs



Lake Hood
(YMCA)

Turnagain (Boys & Girls Club – Spring Break)

Northwood (No Programs)



Nunaka Valley
(No Programs)

Russian Jack (No Programs)

Chester Valley (Camp Fire on Half Days)



Tudor
(YMCA)

Lake Otis (21st Century)

Denali (YMCA & Denali Community Association before/after school)



Wonder Park
(21st Century)

Williwaw (YMCA trying but currently no staff available)

Ptarmigan (21st Century)

Additional Feedback & Analysis

- **Baxter**

- Concerns around enrollment & staffing as a Year 3 closure

- **Bear Valley Elementary**

- BVCA provides before, during (Pre-K) and after school programs
- BVCA has shared plans for expansion
- Transportation Concerns

- **Fire Lake**

- Concerns around enrollment & staffing as a Year 2 closure
- Curricular Concerns

- **Lake Hood**

- Lowest enrollment school
- Movement of SBBS program

Additional Feedback & Analysis

- **Nunaka Valley**

- Concerns around enrollment & staffing as a Year 2 closure
- What is a Pre-K Center?

- **Tudor Elementary**

- Programmatic concerns: staffing
- Curriculum fidelity
- Concerns about Whaley relocation
- Available space at Lake Otis – looking at Kasuun

- **Wonder Park**

- Movement of Special Education programs
- Open concept design

- **East Side Community**

- Concerns about the number of recommended schools on the East Side

Rightsizing Effects on Special Education

Year 1 Schools (2025-2026)

School	Special Education Program	New School Location
Bear Valley	Resource	Special Education students will follow the same residential boundaries as General Education students
Lake Hood	Resource	Special Education students will follow the same residential boundaries as General Education students
Lake Hood	School-Based Behavior Supports (SBBS)	Special Education students in SBBS will transition to Turnagain Elementary
Tudor	Resource	Special Education students will follow the same residential boundaries as General Education students

Rightsizing Effects on Special Education

Year 2 Schools (2026-2027)

School	Special Education Program	New School Location
Fire Lake	Resource	Special Education students will follow the same residential boundaries as General Education students
Fire Lake	Structured Learning Classroom (SLC)	Special Education students in SLC will transition to Eagle River Elementary
Nunaka Valley	Resource	Special Education students will follow the same residential boundaries as General Education students
Wonder Park	Resource	Special Education students will follow the same residential boundaries as General Education students
Wonder Park	Structured Learning Classroom (SLC)	Special Education students in SLC will transition to Mountain View and Chester Valley Elementary this year based on their MS/HS feeder zone (Clark or Begich)

Rightsizing Effects on Special Education

Year 3 Schools (2027-2028)

Recommended School for Closure	Special Education Program	New School Location
Baxter	Resource	Special Education students will follow the same residential boundaries as General Education students
Baxter	Structured Learning Classroom (SLC)	Special Education students in SLC will transition to Rogers Park Elementary and Chester Valley Elementary based on their MS/HS feeder zone (Wendler or Begich)

Timeline of Major Events



Questions/Comments?